

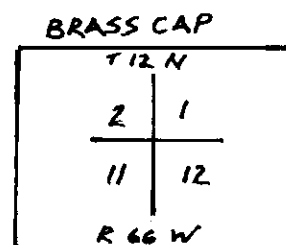
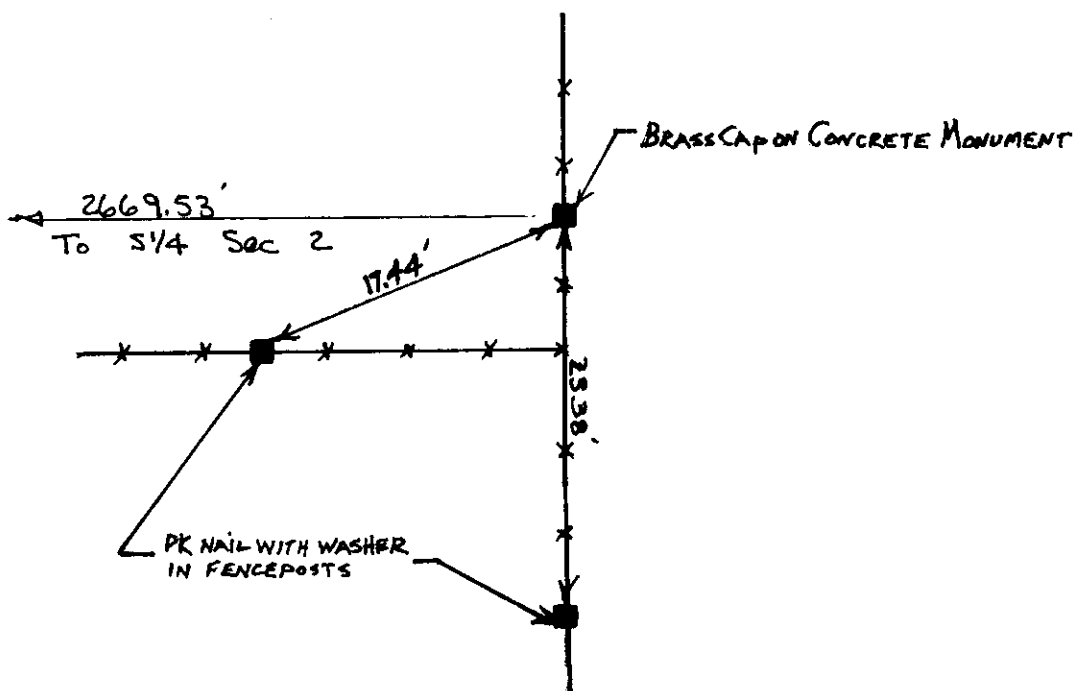
State of Wyoming Corner Record

(In compliance with the *CORNER PERPETUATION AND FILING ACT*, Wyoming Statutes, 1977, Section 36-11-101, et. seq., and the Rules and Regulations of the Board of Registration for Professional Engineers and Professional Land Surveyors)

Reverse side of this form may be used if more space is needed.

Record of original survey and citation of source of historical information (if corner is lost or obliterated). Description of corner monumentation evidence found and/or monument and accessories established to perpetuate the location of this corner. Sketch of relative location of monument, accessories, and reference points with course and distance to adjacent corner(s) (if determined in this survey). Method and rationale for reestablishment of lost or obliterated corner.

FOUND: CITY OF CHEYENNE BRASS CAP ON CONCRETE MONUMENT
SET: 4 1/2" LATHE AND 18" STAKE PAINTED RED NEXT TO CORNER
REFERENCE SET: PK NAIL WITH WASHER LS #566 IN FENCEPOSTS
G.L.O. RECORD: SANDSTONE 20"x9"x6"



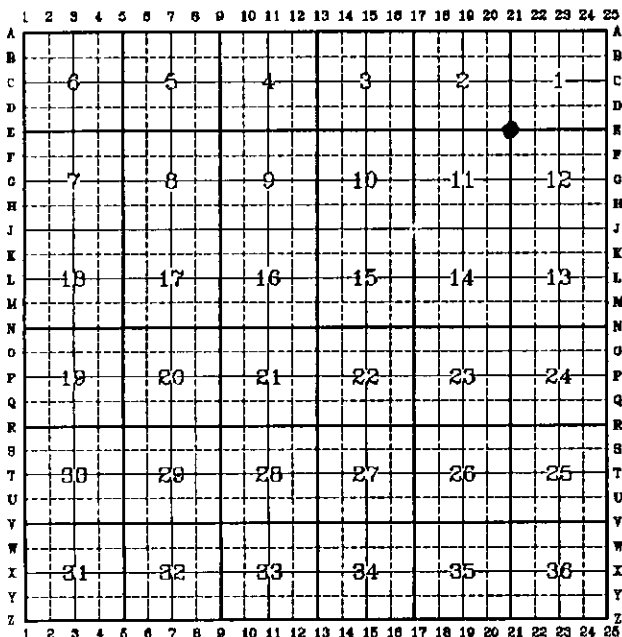
189568

SEP 13 AM 10 57

LARRABEE COUNTY CLERK
CHEYENNE, WY.

Date of Field Work: 19 July 1995 Office Reference: 2831

CROSS INDEX DIAGRAM

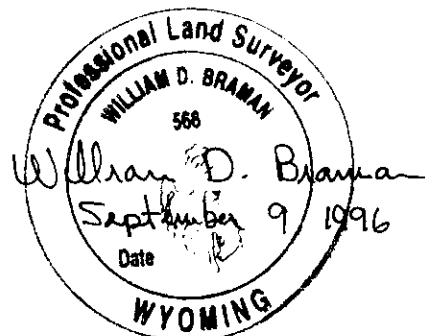


Firm/Agency, Address

INTERMOUNTAIN PROFESSIONAL SERVICES, INC.
5801 OSAGE AVENUE
CHEYENNE WY 82001

Telephone Number: (307) 632-3138

This corner record was prepared by me or under my direction and supervision.
SEAL & SIGNATURE



Corner Name: SEC CORN 2/11/12 Section: T 12 N R 66 W; 6 P.M. Cross-Index No.: E 21